



LATCH SEAL



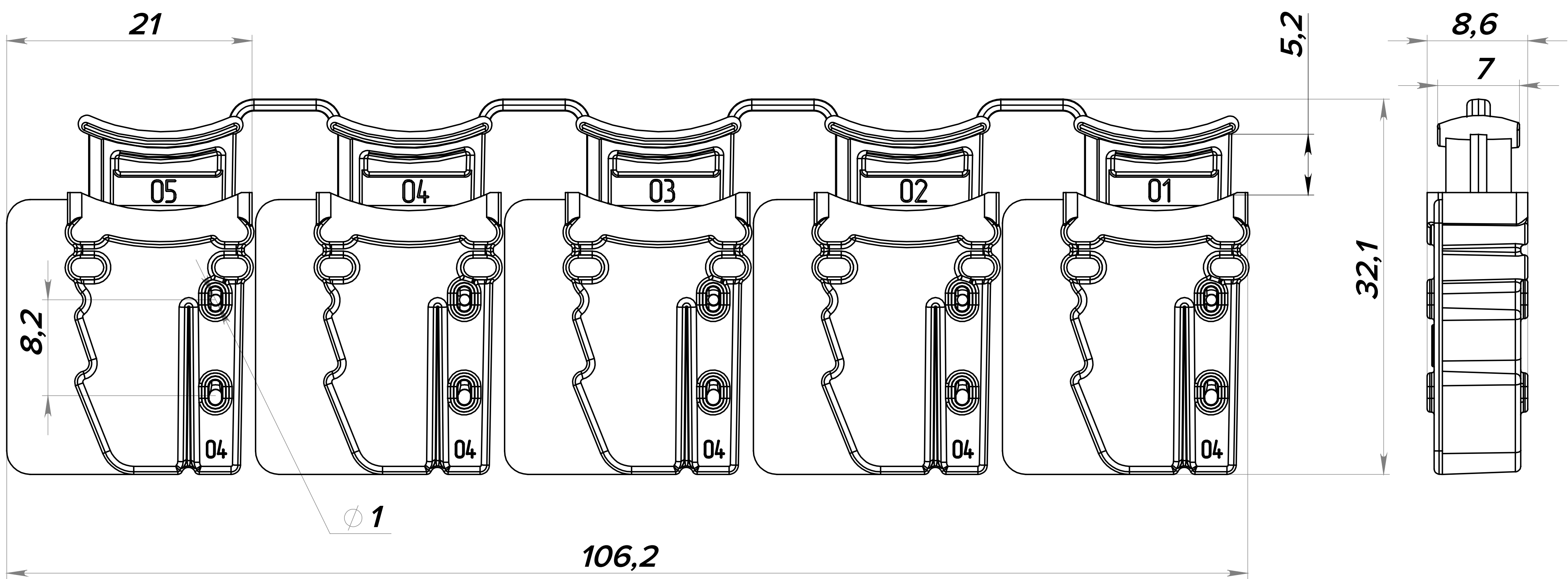
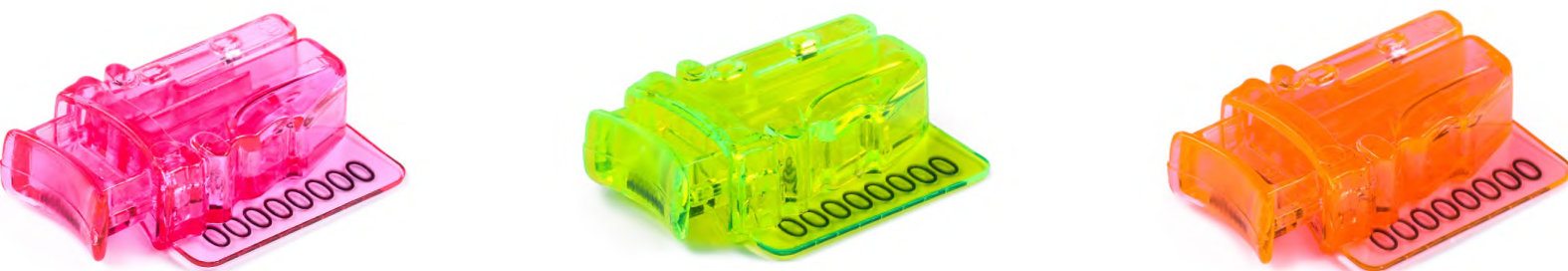
RUBIN

TAMPER-EVIDENT LATCH SEAL

Description:

- Made of polycarbonate
- Operation temperature: -50°C / + 120°C
- Company logo and 8-digit sequential numbering
- Laser marking through the thickness of the material
- All elements of the lock and their integrity are visible
- Locking mechanism: dovetail, 2 elements
- Glowing under the UV light (depends on colors)

Color options:



Package:	Size:	Quantity:	Weigh:
Package of	-	100 pcs	-
Box	10×210×140mm (12.21x8.27x5.51")	0100-750 pcs.	kg(lbs.)
Box	270×190×370mm (10.63x7.48x14.57")	750-1,600 pcs.	kg(lbs.)
Box	380×285×335mm (15x11.2x13.2")	1,600-3,600 pcs.	kg(lbs.)